



# VENUE GUIDE

201 MAIN STREET, NASHUA, NH 03060  
NASHUACENTERFORTHARTS.COM



UPDATED APRIL 2024



# CONTENTS

<b>Intro</b>	<b>1</b>
Management	1
Primary Contacts	2
<b>Venue Overview</b>	<b>3</b>
Building Layout	4
Seating Charts	6
Parking & Load-In	8
Stage Specifications	10
Routing	11
<b>Tech Package</b>	<b>12</b>
Lighting	13
Audio	14
Atmospherics	15
Power	15
Sound Board	15
<b>Hospitality</b>	<b>16</b>
Artist Spaces	17
Restaurants & Coffee Shops	19
Hotels	20
Medical Resources	21
Hardware Stores	22
Music Stores	22

# VENUE MANAGEMENT



**Nashua  
Center  
for the Arts**

## **NASHUA CENTER FOR THE ARTS**

**201 MAIN STREET, NASHUA, NH 03060**

Box Office: Monday – Friday, 10am–4pm

[nashuacenterforthearts.com](http://nashuacenterforthearts.com)

Opened in April of 2023, the Nashua Center for the Arts is New Hampshire's newest live entertainment venue. Located in the heart of downtown Nashua, the NCA has a modern design and offers an intimate audience experience. The NCA has a seated capacity of 750, and a standing general admission capacity of up to 1,000 people.



## **SPECTACLE LIVE**

**57 BEDFORD STREET, SUITE 115, LEXINGTON, MA 02420**

[spectaclelive.com](http://spectaclelive.com)

Spectacle Live is a full-service live entertainment booking, marketing, ticketing, promoting, producing, and venue management organization based in Lexington, MA. We specialize in the marketing and presentation of concerts, theatre, comedy, family entertainment, and festival production in venues throughout New England. Nashua Center for the Arts is Spectacle Live's newest managed venue.

*Spectacle Live uses the ETix ticketing platform*

# PRIMARY CONTACTS

## GENERAL VENUE INQUIRIES

Jake Crumb, *Director of Venues*  
jcrumb@spectaclelive.com  
(617) 631-1257 x 716

## RENTAL INQUIRIES

Kathleen Tormey, *Event Sales Manager*  
ktormey@spectaclelive.com  
(617) 631-1257 x 743

## HOSPITALITY

Valentine Kong, *Event Manager*  
vkong@spectaclelive.com  
(617) 631-1257 x 740

Cianan Heaney, *Event Manager*  
cheaney@spectaclelive.com  
(617) 631-1257 x 739

## PRODUCTION

Adam Taylor, *Director of Production*  
ataylor@spectaclelive.com  
(617) 631-1257 x 733

## MARKETING

Dan Berube, *Director of Marketing*  
dberube@spectaclelive.com  
(617) 631-1257 x 703

## TALENT BUYING & AGENT RELATIONS

Andrew Holden, *Talent Buyer*  
aholden@spectaclelive.com  
(617) 631-1257 x 705

Erik Raneo, *Talent Buyer*  
eraneo@spectaclelive.com  
(617) 631-1257 x 702

## BOX OFFICE & TICKETING

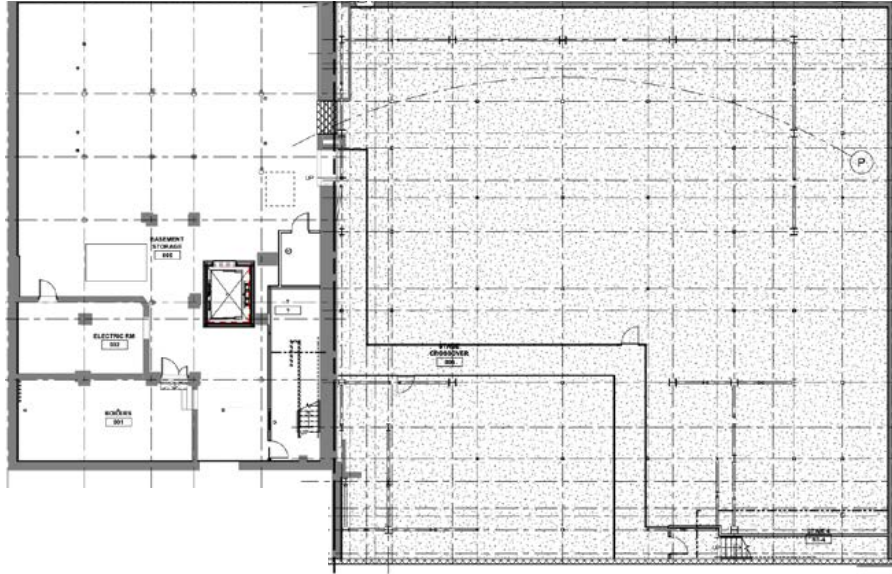
Gen Shappell, *Director of Ticketing*  
gshappell@spectaclelive.com  
(617) 631-1257 x 720

The background image shows the exterior of the Nashville Center for the Arts building at dusk. The building features a modern design with a dark facade and large glass windows. The name "NASHVILLE CENTER FOR THE ARTS" is visible in large, light-colored letters on the building's facade. A balcony with a metal railing is visible on the upper level. The sky is dark, and the building's lights are on, creating a dramatic scene.

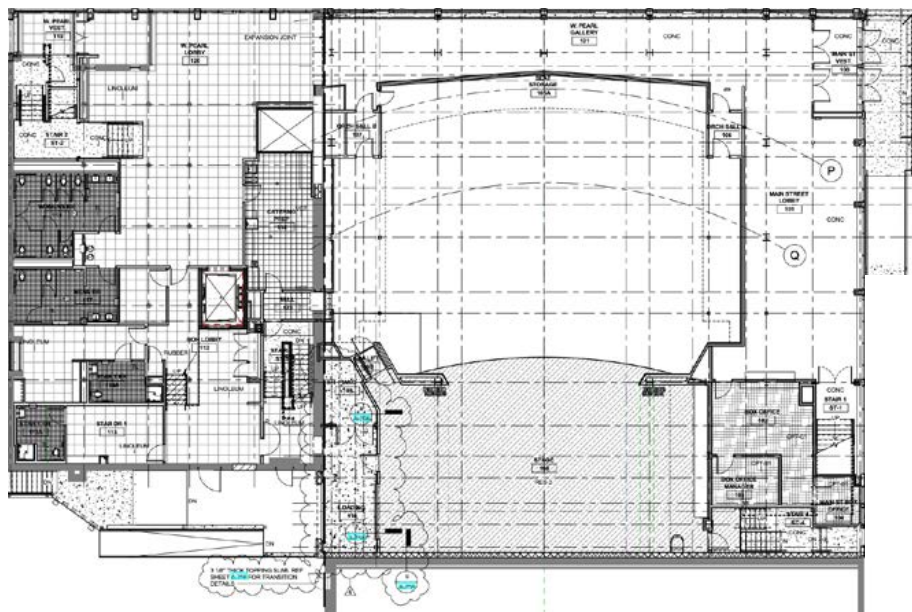
# I VENUE OVERVIEW

Building Layout | Seating Charts | Parking | Load-In  
Stage | Map & Routing

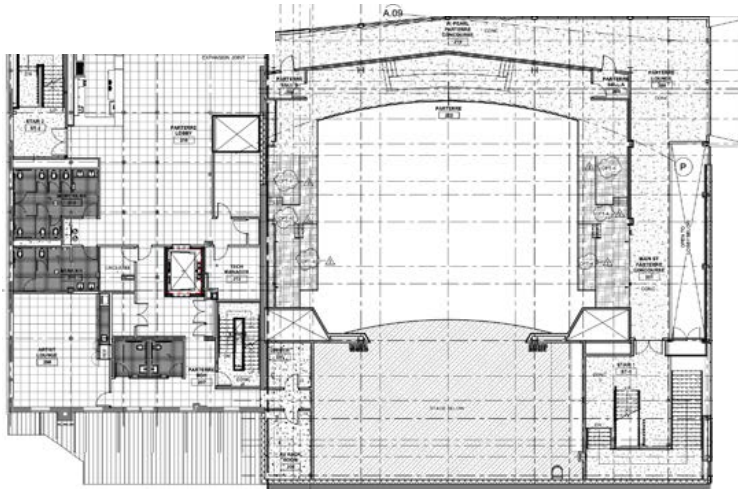
# BUILDING LAYOUT



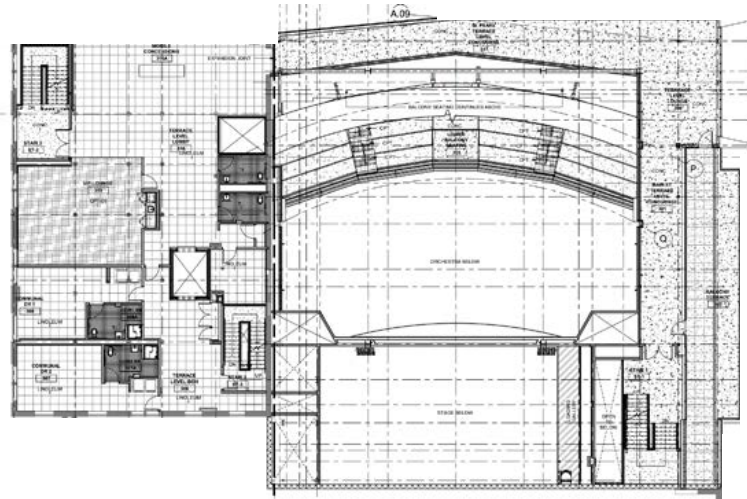
Basement Floor Plan



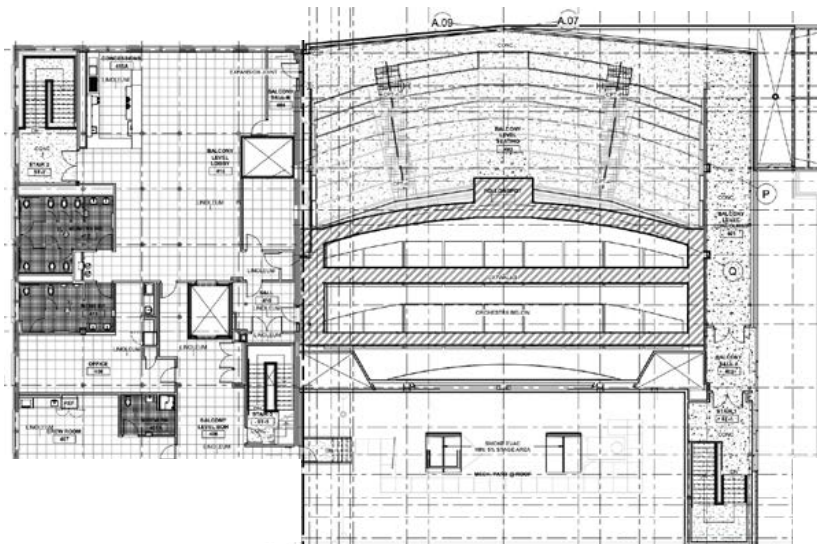
First Floor Plan | ORCHESTRA LEVEL



Second Floor Plan | PARTERRE LEVEL



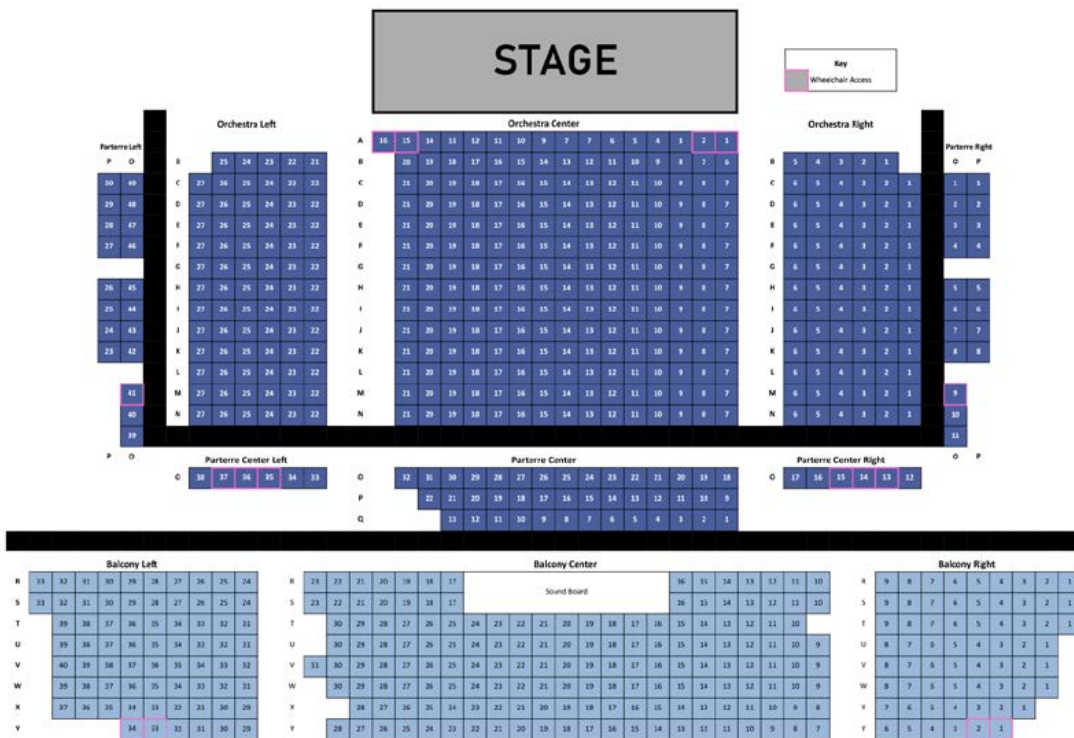
Third Floor Plan | TERRACE LEVEL



Fourth Floor Plan | BALCONY LEVEL



# SEATING CHART VARIATIONS

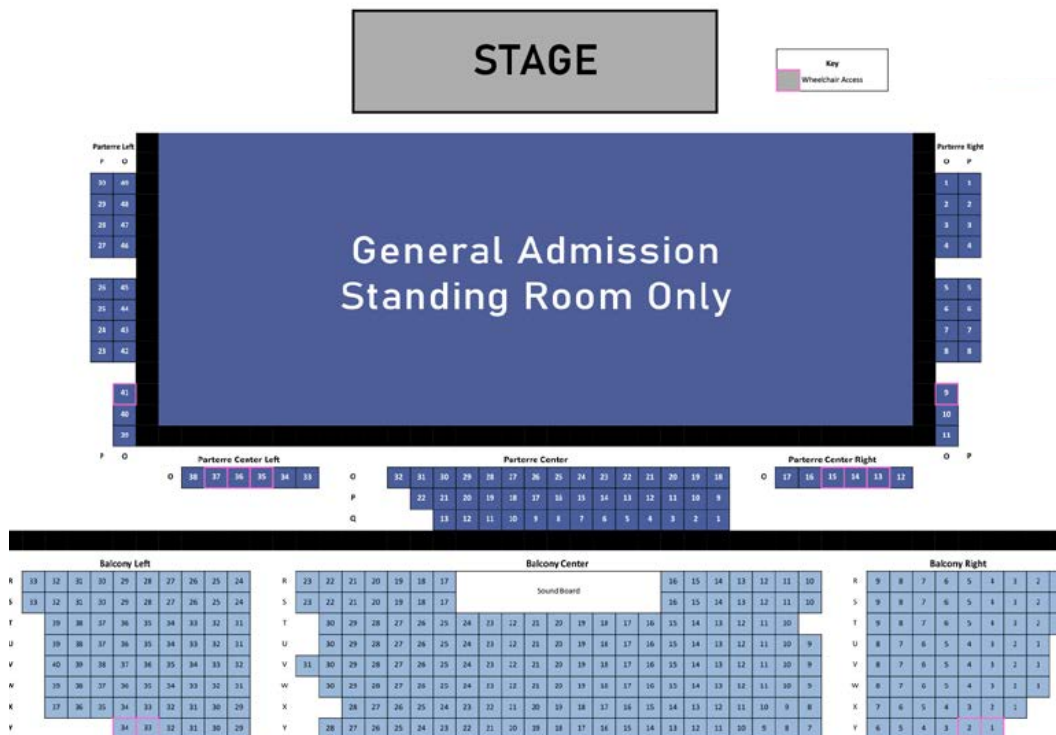


Capacity: 750 | STANDARD SEATING





Floor Capacity: 160 ▪ Balcony Seating: 296 | CABARET STYLE SEATING



Floor Capacity: 640 ▪ Balcony Seating: 296 | GENERAL ADMISSION



# PARKING & LOAD-IN



## Parking | DOWNTOWN NASHUA

### ZONE 1: 90 MINUTE LIMIT

MONDAY - SATURDAY  
9AM - 7PM  
\$1.00/HOUR

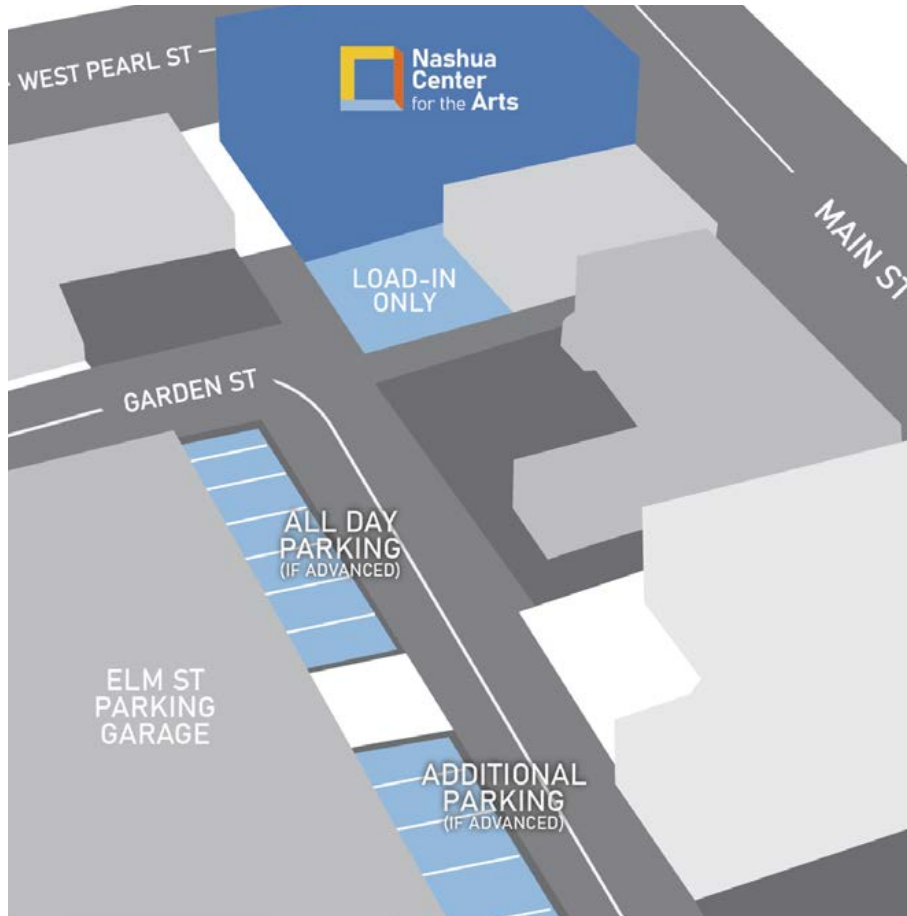
### ZONE 2: 2 HOUR LIMIT

MONDAY - FRIDAY  
9AM - 7PM  
\$0.75/HOUR

### ZONE 3: NO LIMIT

MONDAY - FRIDAY  
9AM - 6PM  
\$0.50/HOUR

Nashua Center for the Arts is conveniently located off Route 3 in Downtown Nashua. With easy load in & out, ample parking close by, and lots of food & beverage options around, this is a great location for both patrons and performers. See P.X for a full list of local services and businesses.



Parking and load in take place behind the venue. The best address for GPS is:

**14 Garden Street  
Nashua, NH 03060**

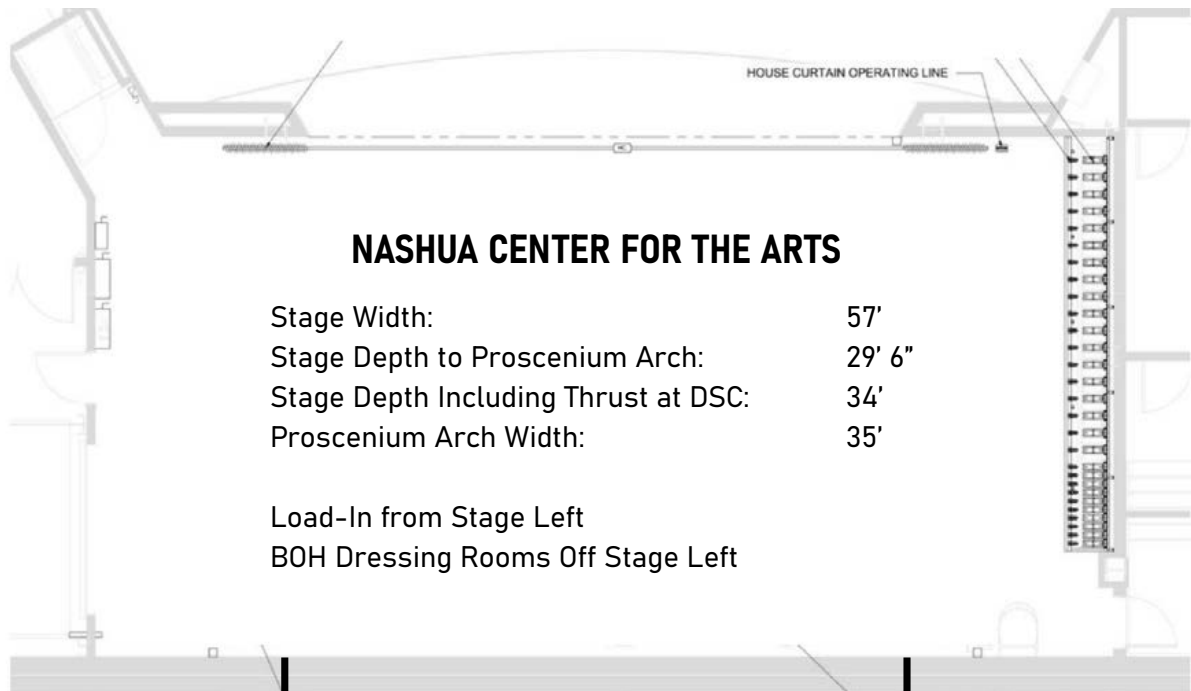
There is roughly a 50' push from the dock to the stage. The roll up door is 10' wide x 8' tall, and a 4' wide dock plate is available



**LOAD-IN DOCK**



# STAGE SPECIFICATIONS



## NASHUA CENTER FOR THE ARTS

Stage Width:	57'
Stage Depth to Proscenium Arch:	29' 6"
Stage Depth Including Thrust at DSC:	34'
Proscenium Arch Width:	35'

Load-In from Stage Left  
BOH Dressing Rooms Off Stage Left



STAGE LEFT

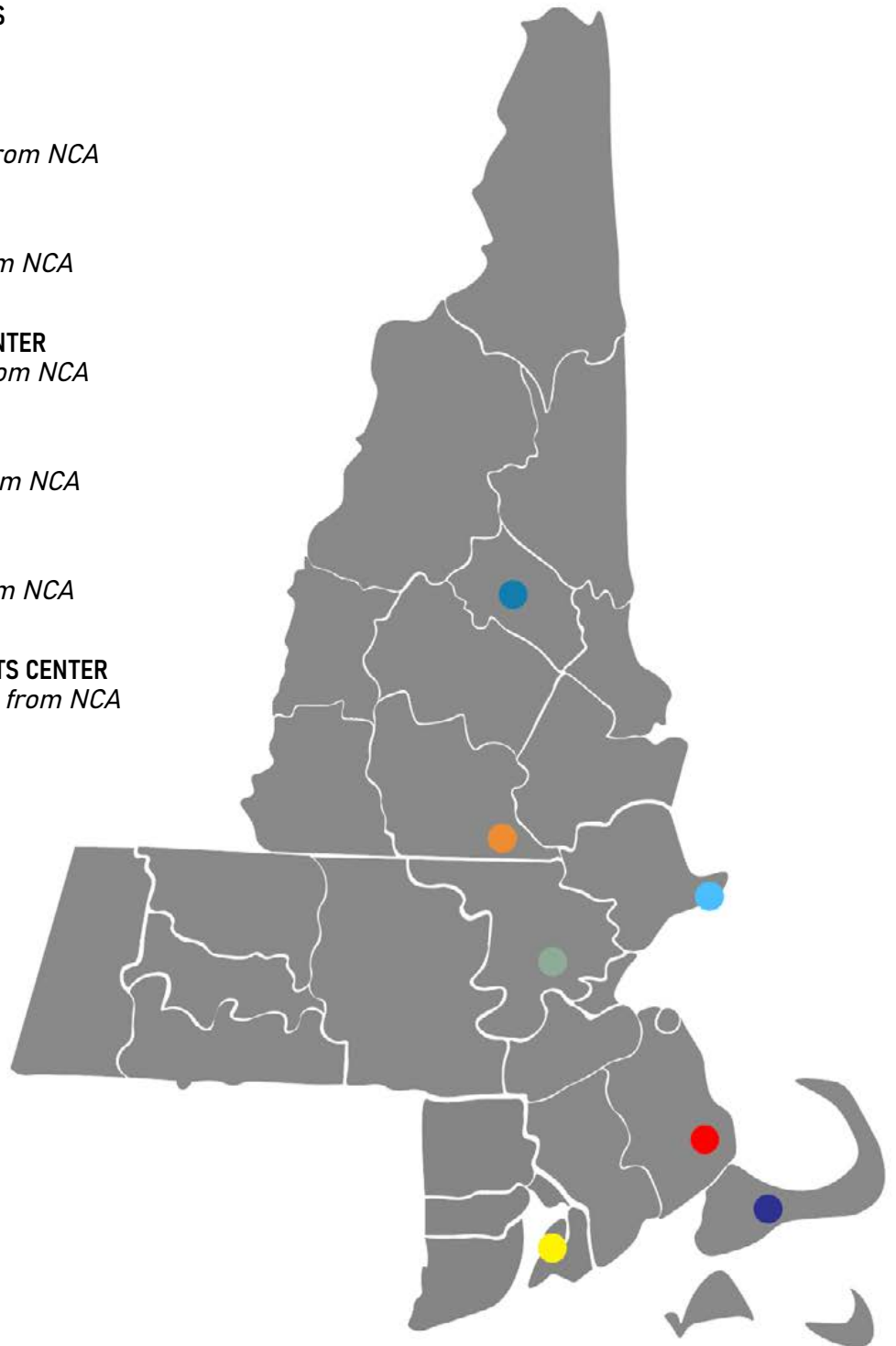


STAGE RIGHT

# ROUTING

This venue conveniently routes with other Northeast buildings. For routing partners, please contact Andrew Holden or Erik Raneo.

- NASHUA CENTER FOR THE ARTS**  
Nashua, NH  
Capacity: 750
- CARY MEMORIAL HALL**  
Lexington, MA - *30 miles from NCA*  
Capacity: 820
- COLONIAL THEATRE**  
Laconia, NH - *60 miles from NCA*  
Capacity: 750
- SHALIN LIU PERFORMANCE CENTER**  
Rockport, MA - *65 miles from NCA*  
Capacity: 330
- PLYMOUTH MEMORIAL HALL**  
Plymouth, MA - *85 miles from NCA*  
Capacity: 1350
- JPT FILM + EVENT CENTER**  
Newport, RI - *115 miles from NCA*  
Capacity: 472
- BARNSTABLE PERFORMING ARTS CENTER**  
Barnstable, MA - *120 miles from NCA*  
Capacity: 1200





# II TECH PACKAGE

Lighting | Audio | Power | Atmospherics | Sound Board



# LIGHTING

## HOUSE CONSOLE

- **GrandMA 3 Lite**

## HOUSE FIXTURES (FOH)

- 24 **ETC Colorsource** | *Front Light*
- 4 **Ayrton Eurus-S** | *Backlight - Spot/Beam*
- 2 **Robert Julian Oz** | *Followspot*

## HOUSE FIXTURES (STAGE)

- 12 **Ayrton Eurus-S** | *Backlight - Spot/Beam*
- 4 **Chauvet Strike Array 4** | *Blinders*
- 5 **ETC Colorsource CYC** | *Cyc Light*
- 24 **Rogue R2X Wash** | *Backlight - Wash*

## RIGGING

- Stage rigging is comprised of a counterweight system with 28 line sets. Each line set is 40' wide with 22'6" of travel for a total trim height of 27'. 735 lbs total per batten.
- 2 Spot positions accessed via catwalks above audience chamber
- Additional moving fixtures, consoles, truss, and ground support available on request (subject to contract) during the show advance with Adam Taylor.

# AUDIO

## PA SYSTEM

- 24 **Meyer Lina** | *12 Per Side*
- 6 **Meyer 900-LFC Subs** | *Hung Center Cluster*
- 7 **Meyer UP-4 Slim** | *FF*
- 3 **Meyer Ultra-X20** | *Under Balcony*
- 3 **Ultra-X40** | *Upper Balcony*
- 2 **Meyer Galileo Galaxy 816** | *Processing*

## MONITOR SYSTEM

- 8 **EAW MicroWedge 12 (bi-amed)** | *Stage Monitors*
- 6 **Crown XTi 4000** | *Monitor Amplifiers (6 mixes)*

## FOH / MONITOR CONSOLE

- **Yamaha CL3 with Rio stage racks** | *Monitors from FOH*

## AUDIO INTERCONNECT SYSTEMS

- **Dante & Cat6 connections** | *Throughout Venue*
- **54 Channel Whirlwind W4 Disconnect** | *Ran Between Stage / FOH*  
(5' and 20' fanout included)

## MICROPHONES

- **Standard Shure & Sennheiser** Microphone Package
- **Whirlwind, Countryman, & Radial DI** (mix of passive and active)

## AUDIO MISC.

- **K&M Microphone Stands** (mix of tall, medium, and short booms)
- 25 **10' Whirlwind XLR**
- 25 **25' Whirlwind XLR**
- 15 **50' Whirlwind XLR**



# POWER

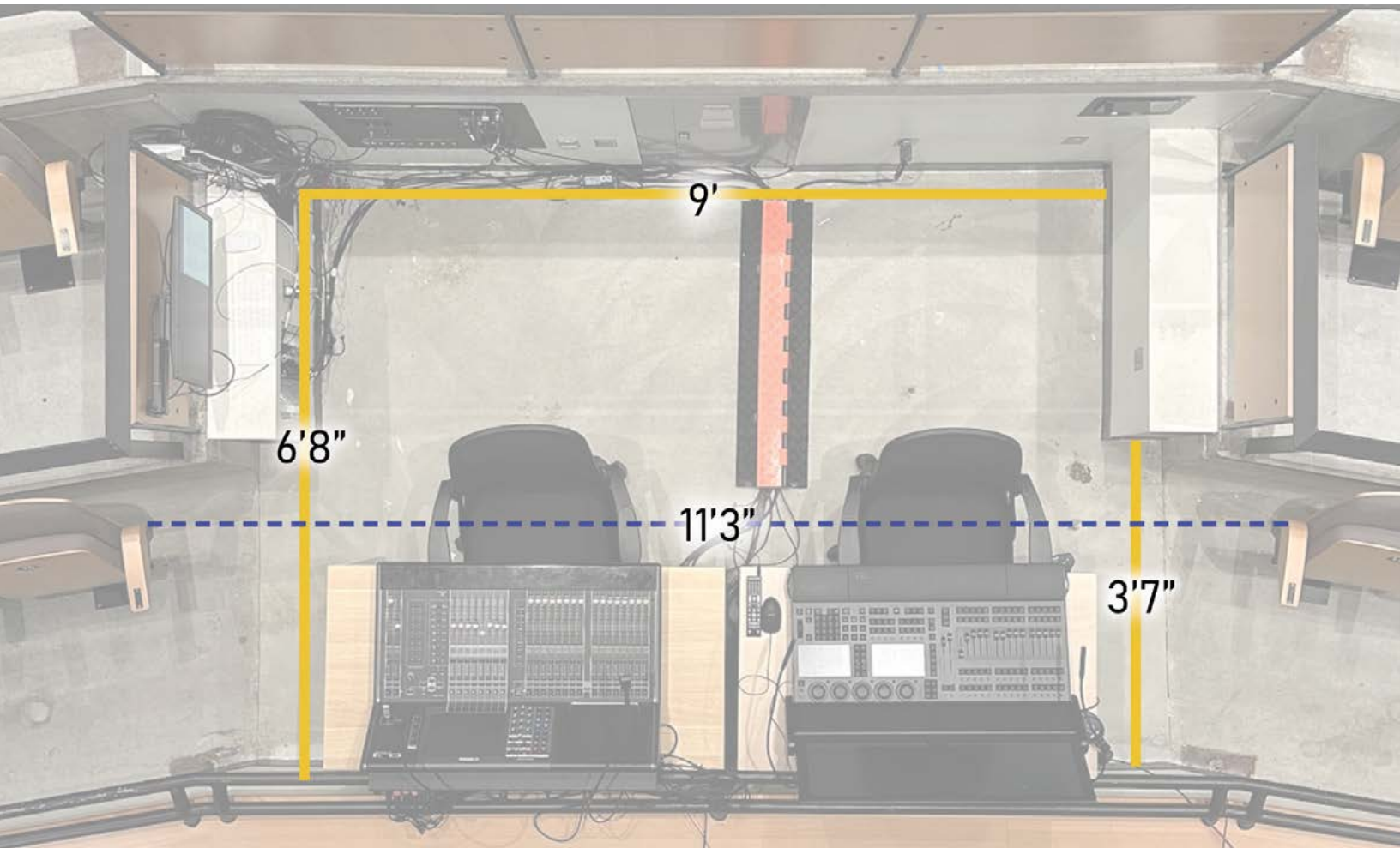
- 1 100 Amp 3 Phase Disconnect | *Loading Dock*
- 2 400 Amp 3 Phase Disconnect | *Stage Left*
- 1 200 Amp 3 Phase Disconnect | *Stage Left*
- 1 100 Amp 3 Phase Disconnect | *Stage Right*
- 1 100 Amp 3 Phase Disconnect | *FOH Catwalk*
- 1 100 Amp 3 Phase Disconnect | *Behind Retractable Seating*

# ATMOSPHERICS

- Haze available upon advance and subject to show expense depending on contract

# SOUND BOARD

- The Nashua Center for the Arts sound board is located in the front of Balcony Center in rows R and S. Dimensions are included below.





# HOSPITALITY

Artist Spaces | Restaurants & Coffee Shops | Hotels  
Medical Resources | Music Stores | Hardware Stores

# ARTIST SPACES

STAGE LEVEL

- **Star Dressing Room 1** | *Private Bathroom with Shower*
- **Star Dressing Room 2** | *Private Bathroom with Shower*
- **Production Office** | *Table and 2 Chairs*



SECOND FLOOR

- **Artist Lounge** | *Couches, TV, Kitchenette, and 2 Bathrooms*



- **Communal Dressing Room 1** | Seating for 12, Private Bathroom with Shower, Washer & Dryer
- **Communal Dressing Room 2** | Seating for 15, Private Bathroom with Shower,



# RESTAURANTS & COFFEE SHOPS

## RESTAURANT PARTNERS

### **MARGARITAS MEXICAN RESTAURANT**

1 Nashua Dr,  
Nashua, NH 03064  
(603) 883-0996

### **MARTHA'S EXCHANGE RESTAURANT & BREWERY**

185 Main St  
Nashua, NH 03060  
(603) 883-0996

### **SURF SEAFOOD**

207 Main St,  
Nashua, NH 03060  
(603) 595-9293

### **THE PEDDLER'S DAUGHTER**

48 Main St,  
Nashua, NH 03064  
(603) 821-7535

### **RAMBLING HOUSE FOOD & GATHERING**

57 Facetory St, Suite A  
Nashua, NH 03060  
(603) 883-8781

### **RIVERWALK NASHUA**

35 Railroad Sqr,  
Nashua, NH 03060  
(603) 769-1873

### **JAJABELLE'S PASTRY & COFFEE SHOP**

143 Main St,  
Nashua, NH 03060  
(603) 769-1873

### **STELLA BLU**

70 E Pearl St,  
Nashua, NH 03060  
(603) 318-3220

### **MIKE'S ITALIAN KITCHEN**

212 Main St,  
Nashua, NH 03060  
(603) 595-9334

### **EMPANELLE'S**

83 W Pearl St,  
Nashua, NH 03060  
(603) 417-7875

### **COFFEE & KINDNESS**

105 W Pearl St,  
Nashua, NH 03060  
(833) 221-1822

# HOTELS

HOTEL PARTNERS



## SHERATON NASHUA

11 Tara Blvd,  
Nashua, NH 03062  
(603) 888-9970

[Book Now](#)



## CLARION INN

10 St Laurent St  
Nashua, NH 03064  
(603) 888-7700

[Book Now](#)



## HOMEWOOD SUITES

15 Tara Blvd,  
Nashua, NH 03062  
(603) 546-7470

[Book Now](#)

\*Discounted rates available when booking directly with our hotel partners.

## DOUBLE TREE BY HILTON

2 Somerset Pkwy,  
Nashua, NH 03063  
(603) 886-1200

## HOLIDAY INN EXPRESS

4 Amherst Rd,  
Nashua, NH 03054  
(603) 429-3600

# MEDICAL RESOURCES

HEALTHCARE PARTNERS



## **SOUTHERN NEW HAMPSHIRE MEDICAL CENTER**

17 Prospect St,  
Nashua, NH 03060  
(603) 577-2800



## **SAINT JOSEPH'S HOSPITAL**

172 Kinsley St,  
Nashua, NH 03060  
(603) 882-3000

## **WALGREENS PHARMACY**

283 Main St,  
Nashua, NH 03060  
(603) 889-6124

## **CVS PHARMACY**

242 Main St,  
Nashua, NH 03060  
(603) 886-1786

# MUSIC STORES

## **DARRELL'S MUSIC HALL & PIANO GALLERY**

*Authorized Yamaha Piano Dealer*

75 Main St,  
Nashua, NH 03060  
(603) 886-1748

## **GUITAR CENTER**

258 Daniel Webster Highway  
Nashua, NH 03060  
(603) 891-5777

# HARDWARE STORES

## **NASHUA ACE HARDWARE**

129 W Pearl St,  
Nashua, NH 03060  
(603) 882-9491

## **BELLETTES OF NASHUA**

80 Northeastern Blvd,  
Nashua, NH 03060  
(603) 891-5777